

SOLARCOOL PANEL AIR CONDITIONING SYSTEM

SolarCool is proud to offer the SolarCool Air Conditioning System. It is the combination of a proprietary evacuated tube solar thermal collector integrated with a 2-stage split or package air conditioner system. This creates the most energy efficient air conditioning system available today!

SolarCool...The Hotter it Gets, The Better It Works!



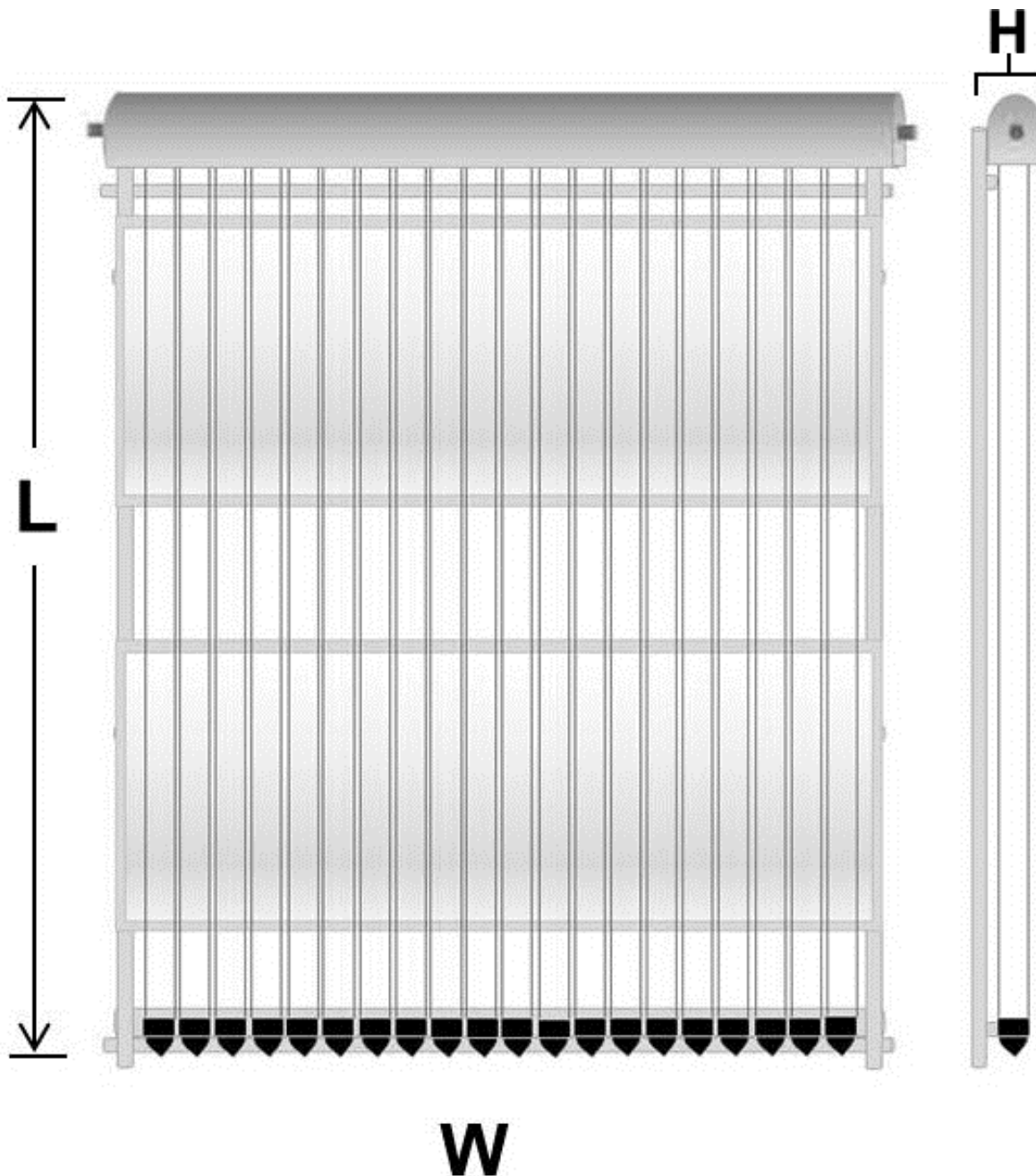
Solar Thermal Collector Panel

FEATURES and BENEFITS

- **High Borosilicate Glass Tube** - Reliable and efficient twin-glass
- **Aluminum Header**-Corrosion resistant header designed to withstand all climates
- **High Efficiency Absorption Coating**-Coating is applied using vacuum magnetic control sputtering, which provides a coefficient of at least 92%, with an emission coefficient of approximately 8%
- **Copper U Pipes** -Provides rapid heat transfer and more hail resistant
- **Easy Installation** -Frame ready for mounting
- **Multiple Applications** –Compatible with 2-stage Packaged or Split Systems with optional Heat Pump, Gas or Dual Fuel Configurations
- **Aluminum Alloy Frame**-Lightweight, weather resistant and durable
- **Corrosion resistant copper header**-Designed to withstand all climates
- **Silver aluminum Casing** -Stable solar conversion throughout the day
- **Durability**-Able to endure impact of hail up to 25mm in diameter at max velocity
- **Maintenance Free** - No moving parts offers more reliability
- **2-Year Warranty** -Offers a 2 year parts warranty for peace of mind

SOLARCOOL VACUUM PIPE COLLECTOR

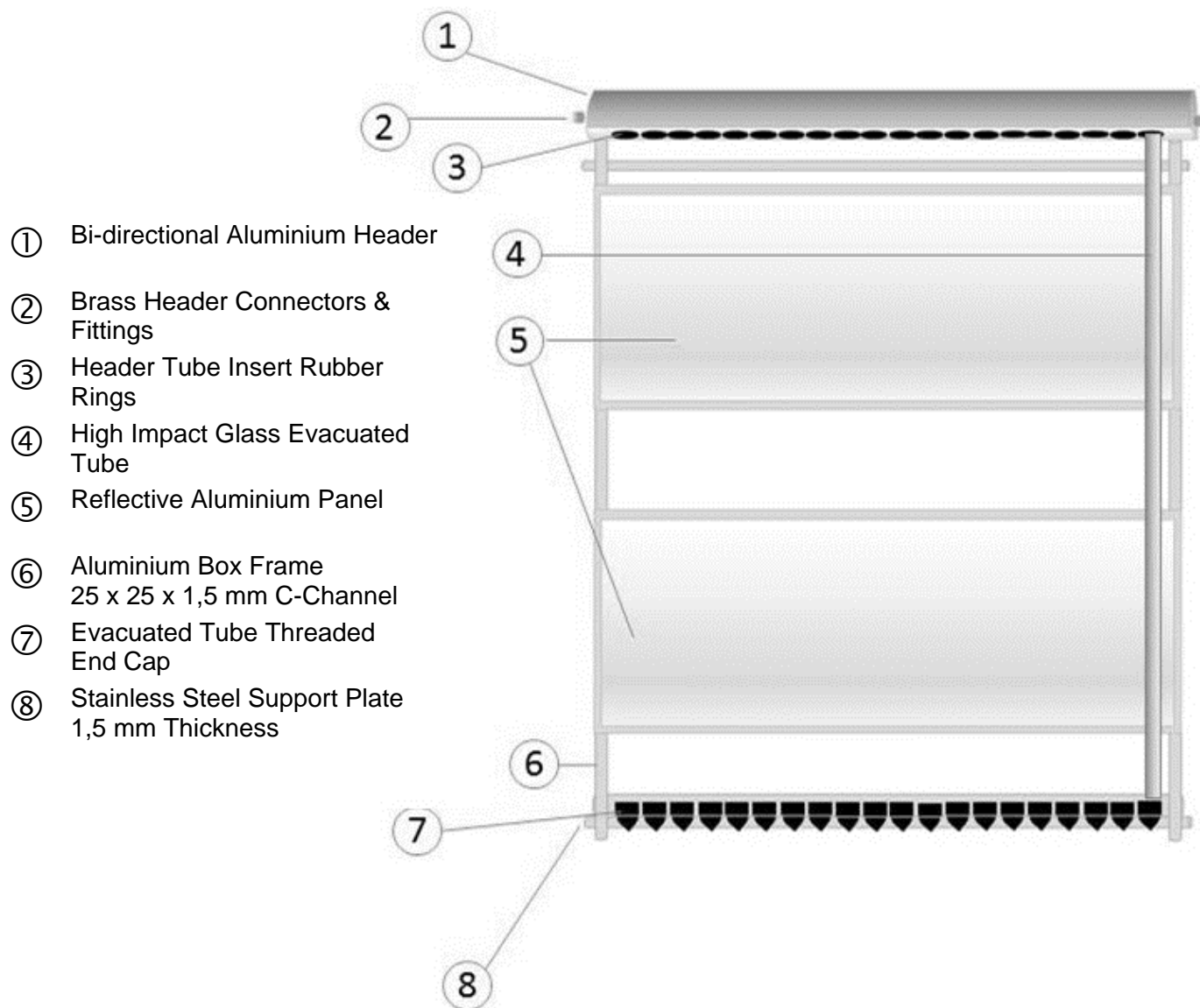
Dimensions



Panel Dimensions			Tube Dimensions		Weight
Height	Width	Length	Length	Diameter	138 lbs.
130 mm	1.620 mm	1.525 mm	1.500 mm	47 mm	61 kg

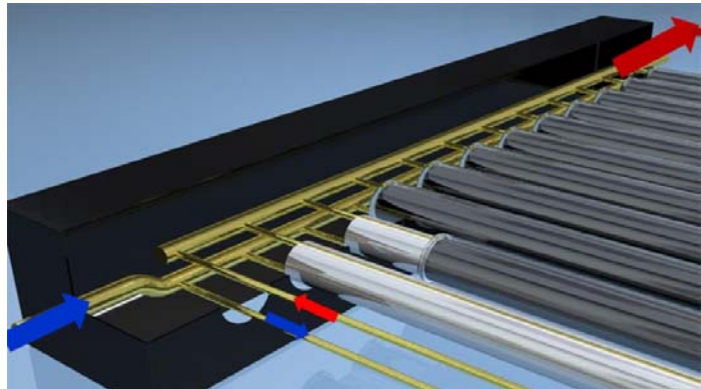
SOLARCOOL VACUUM PIPE COLLECTOR

Parts List



SOLARCOOL VACUUM PIPE COLLECTOR

Components AND Specifications



Specific Data	
Total area:	3.80 m ² /40.90 ft ²
Collector depth:	130 mm/5.1"
Number of tubes:	20
Length of the tubes:	1500 mm
Volume of the refrigerant:	0,2 kg added
Type:	Vacuum tube collector with U pipes
Material of the cover:	Aluminum
Material of the cover tube:	Borosilicate glass
Transmission of the cover tube:	86%
Outer diameter of the cover tube:	47 mm
Thickness of the cover tube:	1.5 mm
Outer diameter of the inner tube:	33 mm
Thickness of the inner tube:	1.5 mm

SOLARCOOL VACUUM PIPE COLLECTOR

Components AND Specifications

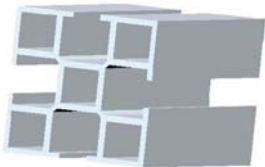
Absorber	
Material of the absorber:	Glass
Kind/Brand of selective coating:	Graded Al/N/Al on Glass
Absorptive coefficient:	92%
Material of the absorber pipes:	ACR Copper, alloy CU-DHP acc to EN 12 735-1
Layout of the absorber pipes:	U pipe
Absorber pipe dimensions:	Ø 8 mm x 1 mm
Material of the header pipe:	ACR Copper, alloy Cu-DHP
Diameter of the header pipe and connector:	Ø 22 mm x 1 mm; 5/8" Brass threaded MIP or bare copper pipe
Function of the absorber:	Segmented contact sheets to the inner glass tube, connected to the copper pipe
Material of the contact sheets:	Aluminum
Thickness of the contact sheets:	0.2 mm/.007"
Insulation and Casing	
Material of the casing:	Aluminum
Sealing material:	Silicon
Limitations	
Maximum pressure:	69 bar / 1000 psi
Maximum service temperature:	149°C / 300°F
Maximum wind load:	67 mph (108 Km/h)
Recommended tilt angle:	20-50° (depending on latitude)
Packaging for transport	
Material packaging:	Paper Card box with styrofoam protection

ACCESSORIES

Installation Kits

PART NAME	MODEL NO.	APPLICATION
Install Kit "Pitch"	SAE-PITCH	Pitched Roof
Install Add-on "Snow"	SAE-SNOW	2 more brackets for roof installation in regions with high snow load (\geq zone 3 and > 1200 m sea level)
Install Kit "Flat"	SAE-FLAT	Flat Roof
Install Kit "Ground"	SAE-GRND	Ground Mount (same as for Flat Roof)
Install Kit "Wall"	SAE-WALL	Wall Mount

COMPONENTS

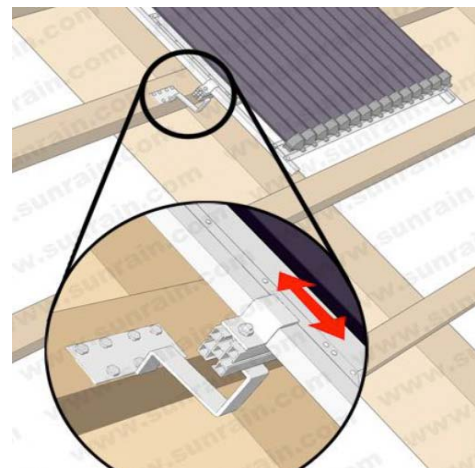
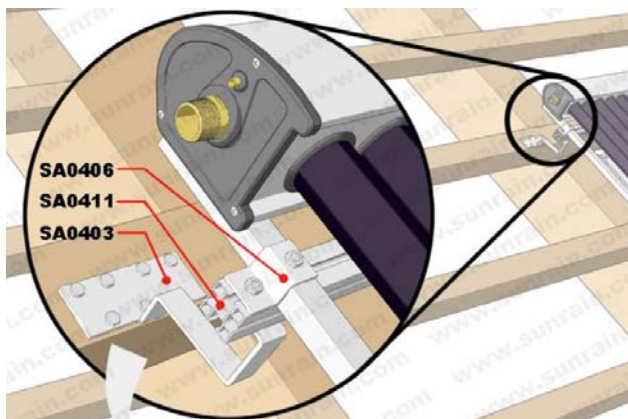


The Rail is suitable for most residential applications, and is manufactured in a mill finish, and has been tested to withstand severe weathering conditions. The rail is made from tough extruded aluminum and will provide years of trouble free-service.



The Mounting Brackets are designed for roof and wall mount installations. They are made from 5mm thick stainless steel, contain holes for assembly with lag screws and are manufactured in a mill finish. They may be used for roof and wall attachment.

Rail Mounting Configuration - e.g. Roof



CERTIFICATIONS

All European certifications passed: CE

SolarCool has a policy of continuous product and product data improvement and it reserves the right to change design and specifications without notice. Solarcool™ is a trademark of SolarCool, USA